

# Hampshire Water Transfer and Water Recycling Project

## Environmental Statement – Figure 7.4 Coverage of archaeological surveys undertaken

**VOLUME NUMBER: 6**

**PLANNING INSPECTORATE SCHEME NUMBER: WA010002**

**APPLICATION DOCUMENT REFERENCE: 6.3**

**APFP REGULATION: 5(2)(a)**

May 2026

Version 0

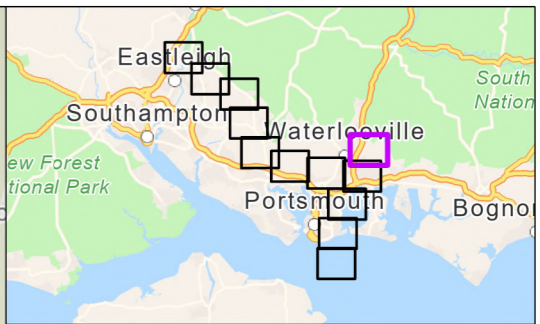
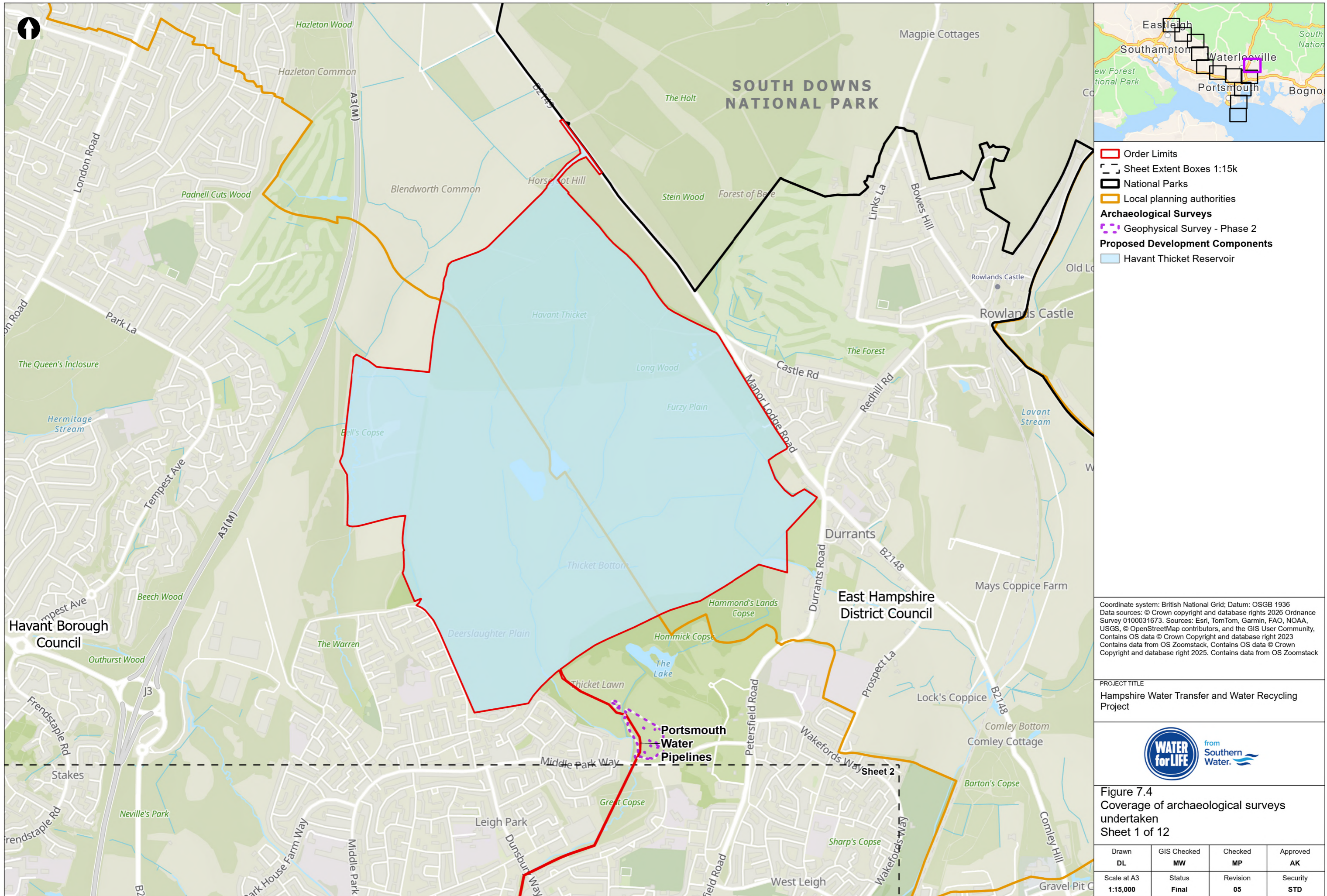


from

**Southern  
Water.** 

The Southern Water logo graphic consists of three stylized, wavy blue lines of varying lengths, positioned to the right of the text 'Southern Water'.





- Order Limits
- Sheet Extent Boxes 1:15k
- National Parks
- Local planning authorities
- Archaeological Surveys**
- Geophysical Survey - Phase 2
- Proposed Development Components**
- Havant Thicket Reservoir

Coordinate system: British National Grid; Datum: OSGB 1936  
 Data sources: © Crown copyright and database rights 2026 Ordnance Survey 0100031673. Sources: Esri, TomTom, Garmin, FAO, NOAA, USGS, © OpenStreetMap contributors, and the GIS User Community, Contains OS data © Crown Copyright and database right 2023 Contains data from OS Zoomstack, Contains OS data © Crown Copyright and database right 2025. Contains data from OS Zoomstack

PROJECT TITLE  
 Hampshire Water Transfer and Water Recycling Project



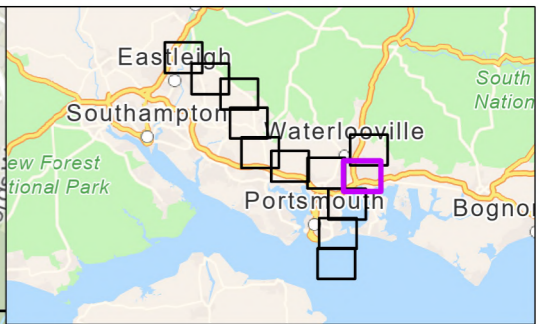
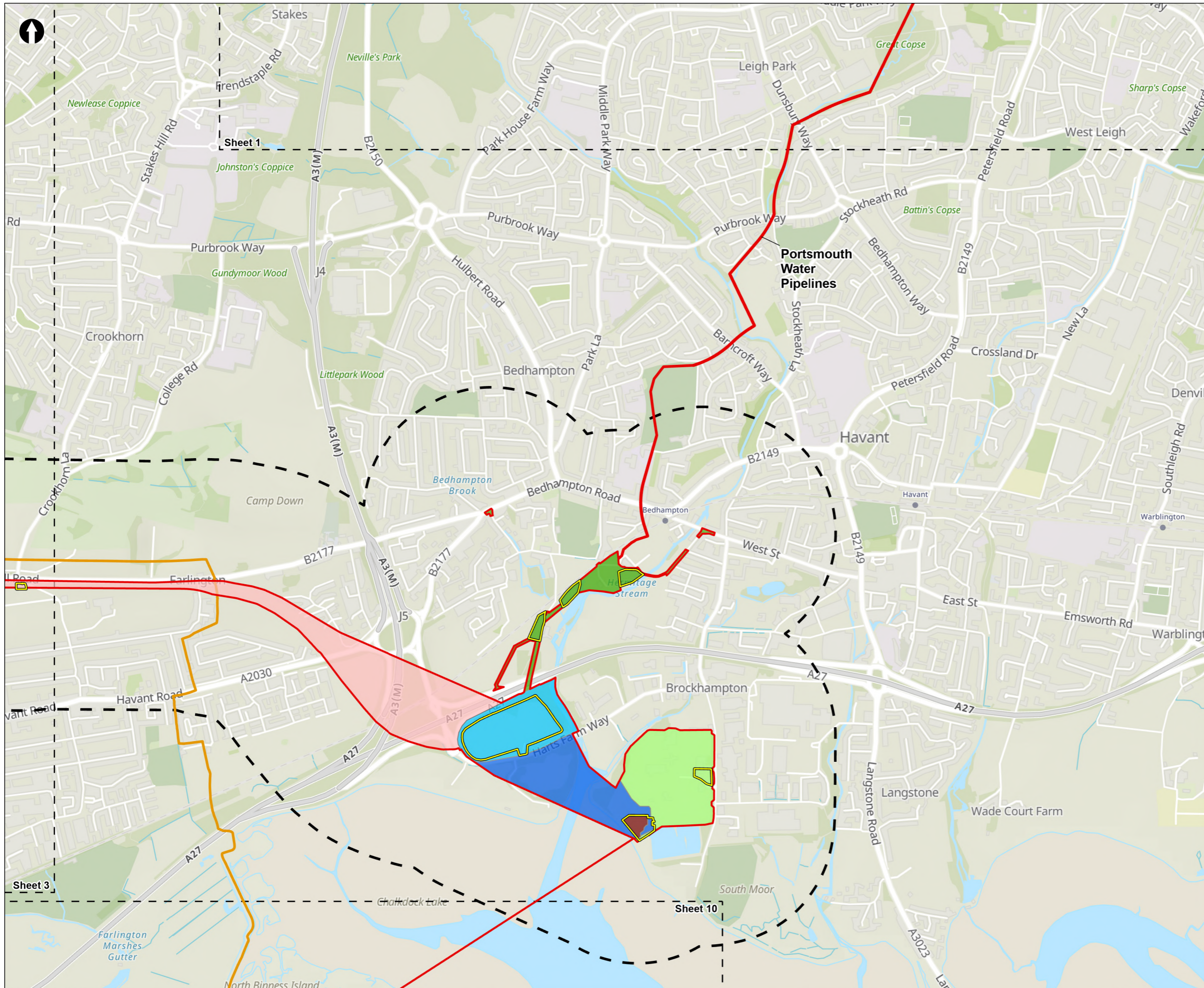
Figure 7.4  
 Coverage of archaeological surveys undertaken  
 Sheet 1 of 12

|                                |                          |                       |                        |
|--------------------------------|--------------------------|-----------------------|------------------------|
| Drawn<br><b>DL</b>             | GIS Checked<br><b>MW</b> | Checked<br><b>MP</b>  | Approved<br><b>AK</b>  |
| Scale at A3<br><b>1:15,000</b> | Status<br><b>Final</b>   | Revision<br><b>05</b> | Security<br><b>STD</b> |

© Southern Water 2026  
 This document is issued for the party which commissioned it and for specific purposes connected with the captioned project only. It should not be relied upon by any other party or used for any other purpose.  
 We accept no responsibility for the consequences of this document being relied upon by any other party, or being used for any other purpose, or containing any error or omission which is due to an error or omission in data supplied to us by other parties.



Drawing Number  
**PC5223-RHD-ES-ZZ-D-Z-0144**



- Order Limits
  - Study Area (500m buffer)
  - Sheet Extent Boxes 1:15k
  - Local planning authorities
- Proposed Development Components**
- Budds Farm Wastewater Treatment Works
  - Limits of Deviation for Budds Farm Pumping Station
  - Pipelines between the Water Recycling Plant site and Bedhampton Springs
  - Water Recycling Plant site
  - Pipelines between Budds Farm Wastewater Treatment Works and the Water Recycling Plant site
- Pipeline between the Water Recycling Plant site and Otterbourne Water Supply Works**
- Section D: The Water Recycling Plant site to Portsdown Hill
  - Construction compounds

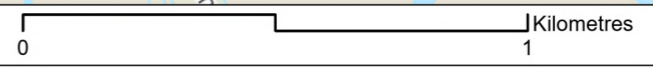
Coordinate system: British National Grid; Datum: OSGB 1936  
 Data sources: © Crown copyright and database rights 2026 Ordnance Survey 0100031673. Sources: Esri, TomTom, Garmin, FAO, NOAA, USGS, © OpenStreetMap contributors, and the GIS User Community, Contains OS data © Crown Copyright and database right 2023. Contains data from OS Zoomstack, Contains OS data © Crown Copyright and database right 2025. Contains data from OS Zoomstack

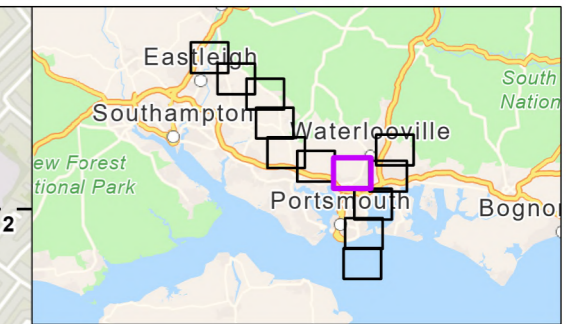
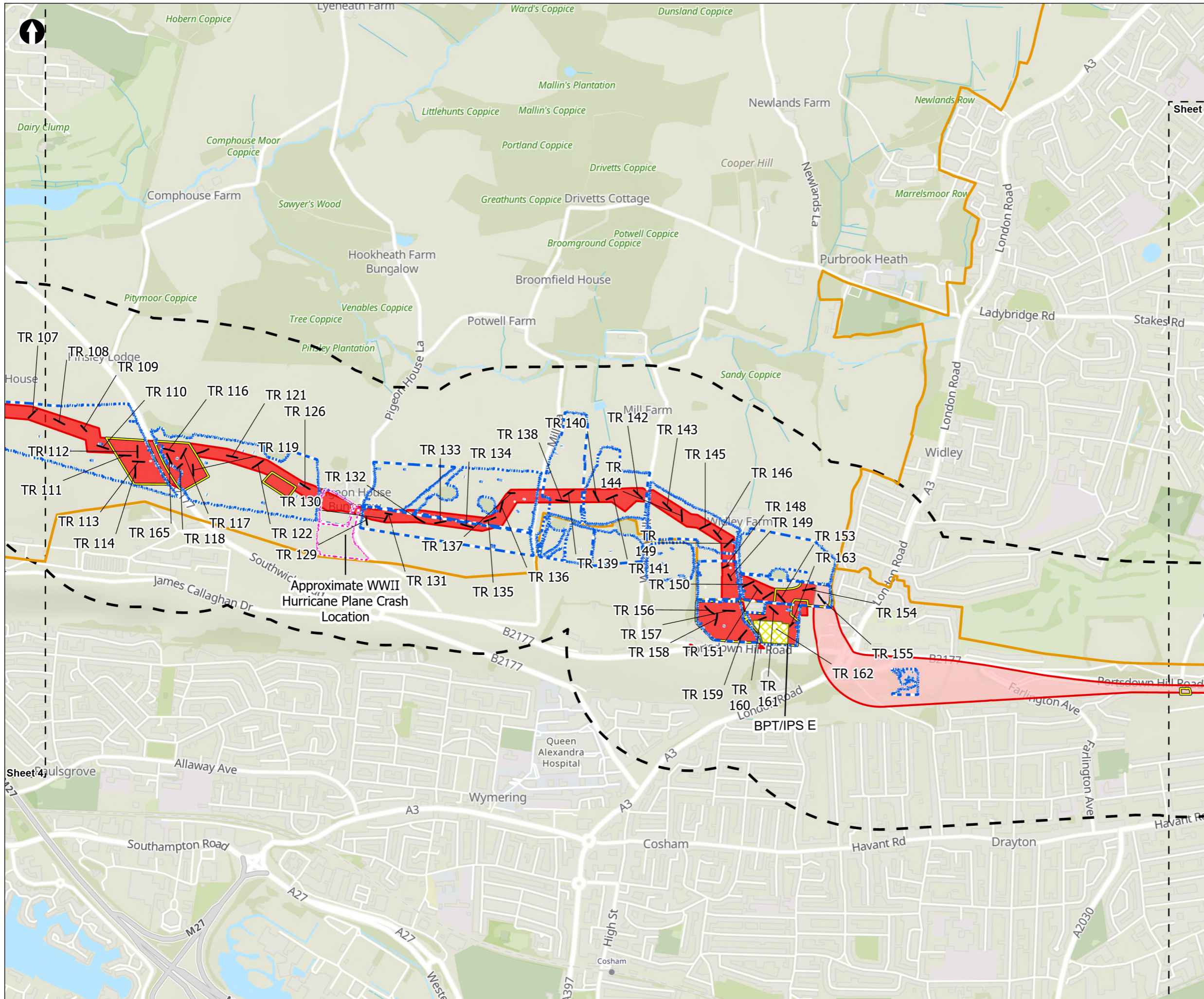
PROJECT TITLE  
 Hampshire Water Transfer and Water Recycling Project



Figure 7.4  
 Coverage of archaeological surveys undertaken  
 Sheet 2 of 12

|                                |                          |                       |                        |
|--------------------------------|--------------------------|-----------------------|------------------------|
| Drawn<br><b>DL</b>             | GIS Checked<br><b>MW</b> | Checked<br><b>MP</b>  | Approved<br><b>AK</b>  |
| Scale at A3<br><b>1:15,000</b> | Status<br><b>Final</b>   | Revision<br><b>05</b> | Security<br><b>STD</b> |





- Order Limits
- Study Area (500m buffer)
- Sheet Extent Boxes 1:15k
- Local planning authorities
- Archaeological Surveys**
- GPR Detailed Survey Extent
- Geophysical Survey Phase 1
- Trench
- Pipeline between the Water Recycling Plant site and Otterbourne Water Supply Works**
- Section D: The Water Recycling Plant site to Portsdown Hill
- Section E: Portsdown Hill to Boarhunt
- Construction compounds
- Above Ground Plant**
- Break Pressure Tank & Intermediate Pumping Station

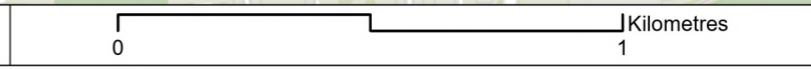
Coordinate system: British National Grid; Datum: OSGB 1936  
 Data sources: © Crown copyright and database rights 2026 Ordnance Survey 0100031673. Sources: Esri, TomTom, Garmin, FAO, NOAA, USGS, © OpenStreetMap contributors, and the GIS User Community, Contains OS data © Crown Copyright and database right 2023. Contains data from OS Zoomstack, Contains OS data © Crown Copyright and database right 2025. Contains data from OS Zoomstack

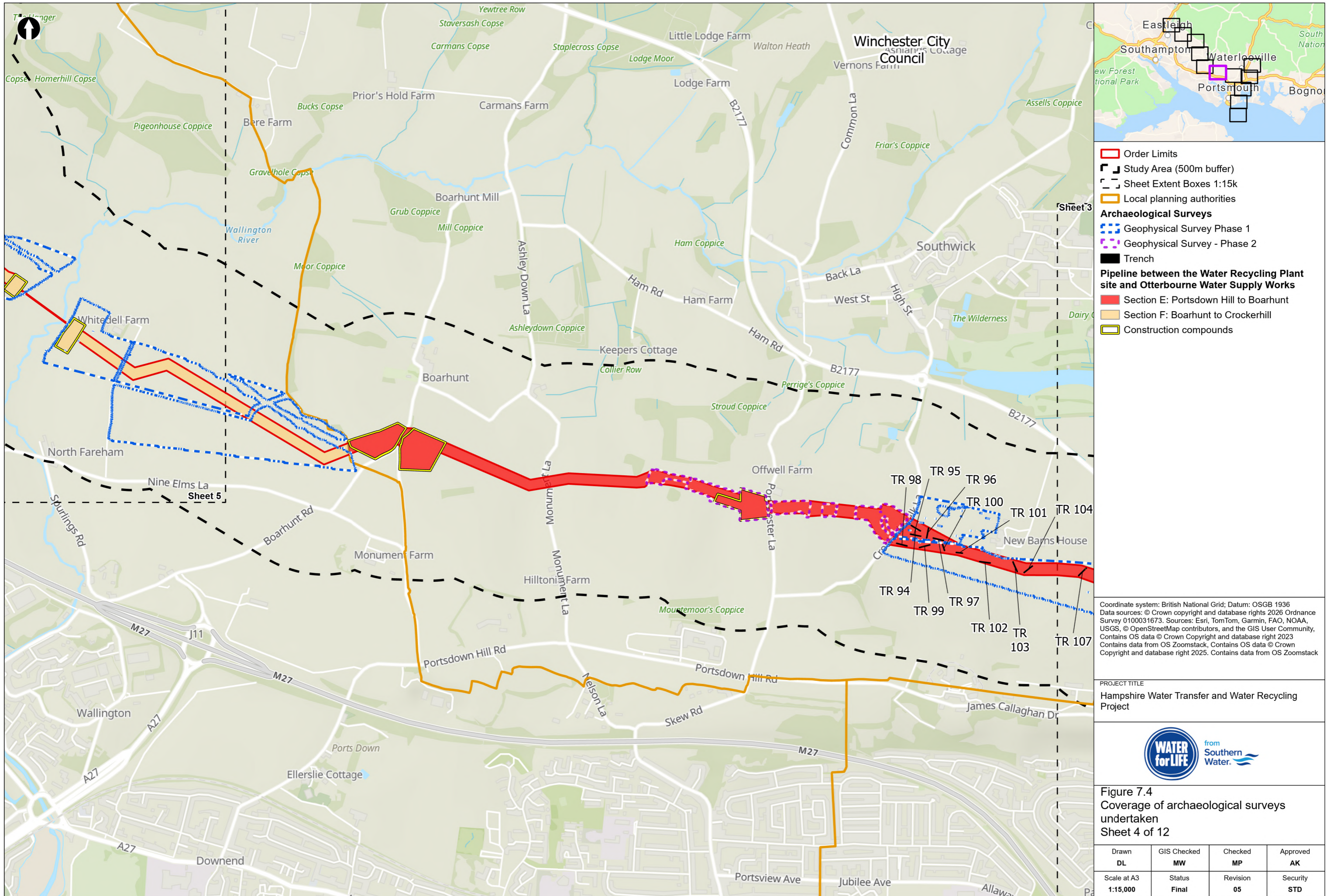
PROJECT TITLE  
 Hampshire Water Transfer and Water Recycling Project



Figure 7.4  
 Coverage of archaeological surveys undertaken  
 Sheet 3 of 12

|                                |                          |                       |                        |
|--------------------------------|--------------------------|-----------------------|------------------------|
| Drawn<br><b>DL</b>             | GIS Checked<br><b>MW</b> | Checked<br><b>MP</b>  | Approved<br><b>AK</b>  |
| Scale at A3<br><b>1:15,000</b> | Status<br><b>Final</b>   | Revision<br><b>05</b> | Security<br><b>STD</b> |





- Order Limits
- Study Area (500m buffer)
- Sheet Extent Boxes 1:15k
- Local planning authorities
- Archaeological Surveys**
- Geophysical Survey Phase 1
- Geophysical Survey - Phase 2
- Trench
- Pipeline between the Water Recycling Plant site and Otterbourne Water Supply Works**
- Section E: Portsdown Hill to Boarhunt
- Section F: Boarhunt to Crockerhill
- Construction compounds

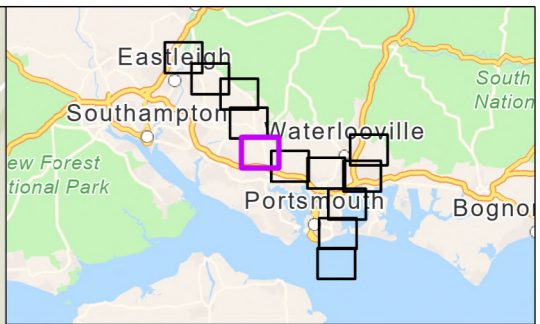
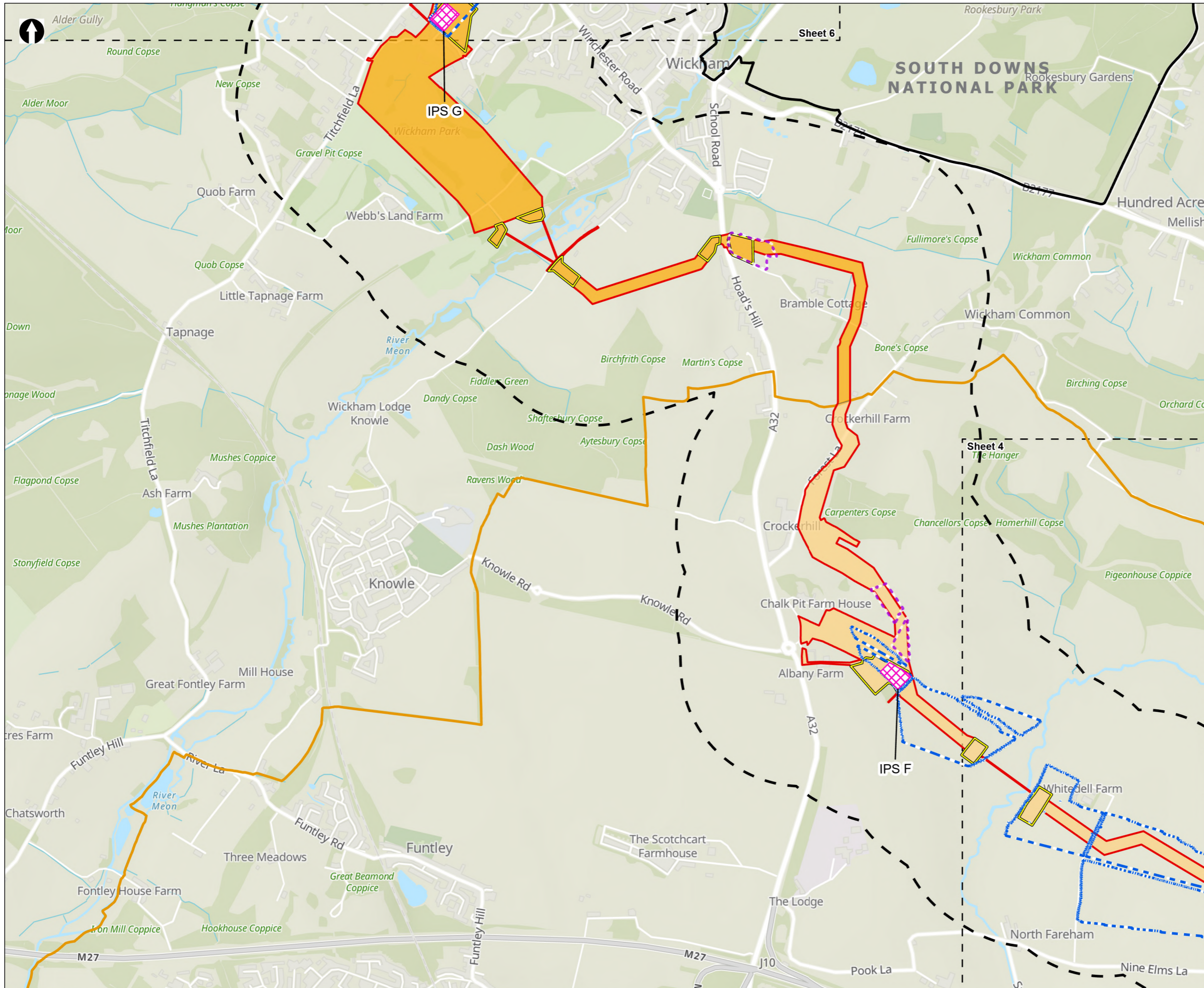
Coordinate system: British National Grid; Datum: OSGB 1936  
 Data sources: © Crown copyright and database rights 2026 Ordnance Survey 0100031673. Sources: Esri, TomTom, Garmin, FAO, NOAA, USGS, © OpenStreetMap contributors, and the GIS User Community, Contains OS data © Crown Copyright and database right 2023 Contains data from OS Zoomstack, Contains OS data © Crown Copyright and database right 2025. Contains data from OS Zoomstack

PROJECT TITLE  
 Hampshire Water Transfer and Water Recycling Project



Figure 7.4  
 Coverage of archaeological surveys undertaken  
 Sheet 4 of 12

|                         |                   |                |                 |
|-------------------------|-------------------|----------------|-----------------|
| Drawn<br>DL             | GIS Checked<br>MW | Checked<br>MP  | Approved<br>AK  |
| Scale at A3<br>1:15,000 | Status<br>Final   | Revision<br>05 | Security<br>STD |



- Order Limits
- Study Area (500m buffer)
- Sheet Extent Boxes 1:15k
- National Parks
- Local planning authorities
- Archaeological Surveys**
- Geophysical Survey Phase 1
- Geophysical Survey - Phase 2
- Pipeline between the Water Recycling Plant site and Otterbourne Water Supply Works**
- Section F: Boarhunt to Crockerhill
- Section G: Crockerhill to Wickham
- Construction compounds
- Above Ground Plant**
- Intermediate Pumping Station

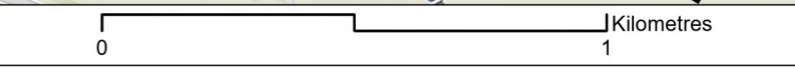
Coordinate system: British National Grid; Datum: OSGB 1936  
 Data sources: © Crown copyright and database rights 2026 Ordnance Survey 0100031673. Sources: Esri, TomTom, Garmin, FAO, NOAA, USGS, © OpenStreetMap contributors, and the GIS User Community, Contains OS data © Crown Copyright and database right 2023 Contains data from OS Zoomstack, Contains OS data © Crown Copyright and database right 2025. Contains data from OS Zoomstack

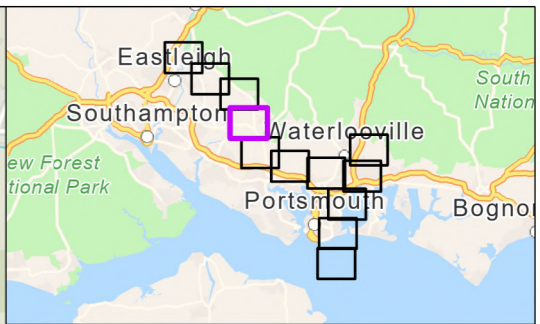
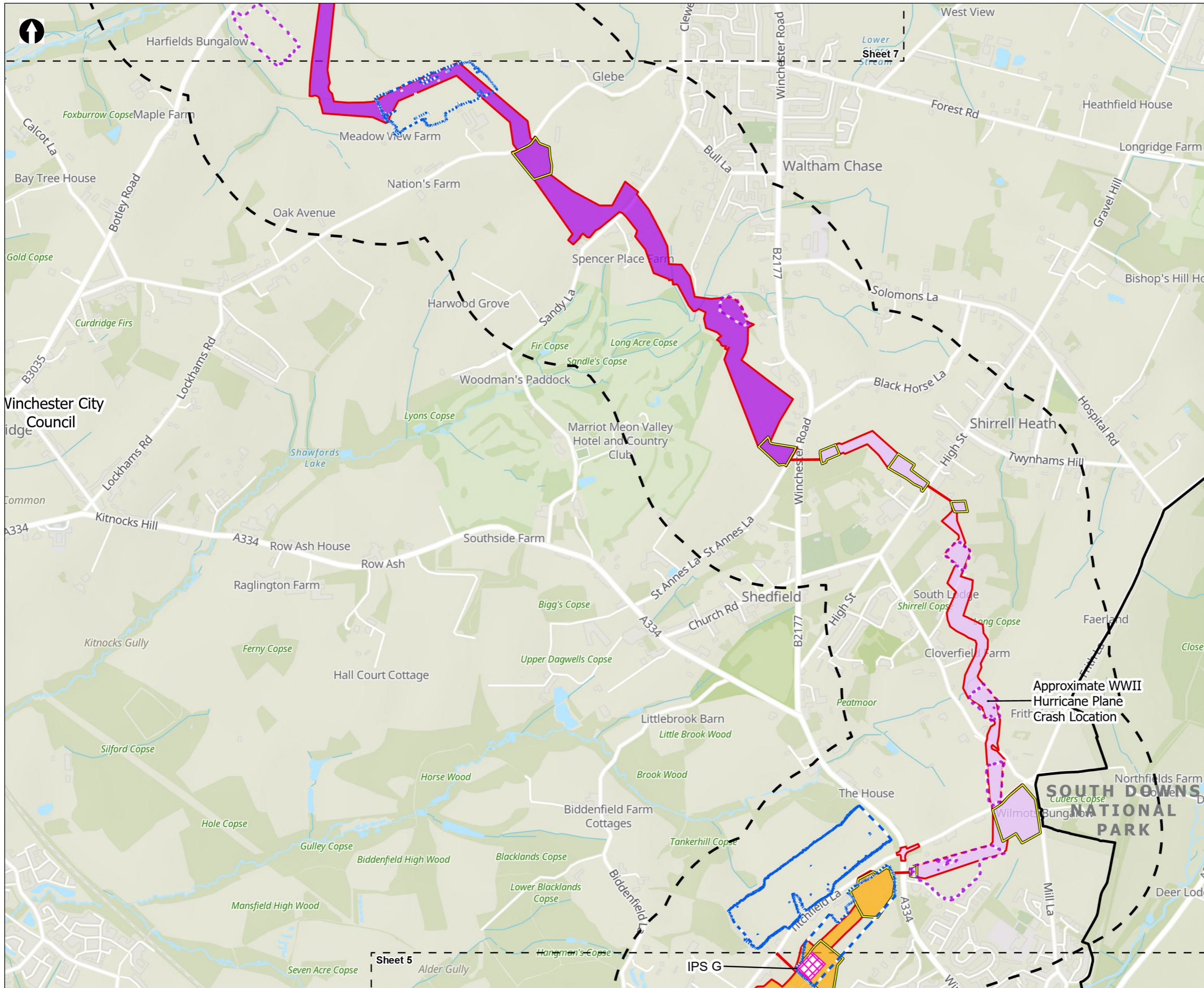
PROJECT TITLE  
 Hampshire Water Transfer and Water Recycling Project



Figure 7.4  
 Coverage of archaeological surveys undertaken  
 Sheet 5 of 12

|                                |                          |                       |                        |
|--------------------------------|--------------------------|-----------------------|------------------------|
| Drawn<br><b>DL</b>             | GIS Checked<br><b>MW</b> | Checked<br><b>MP</b>  | Approved<br><b>AK</b>  |
| Scale at A3<br><b>1:15,000</b> | Status<br><b>Final</b>   | Revision<br><b>05</b> | Security<br><b>STD</b> |





- Order Limits
- Study Area (500m buffer)
- Sheet Extent Boxes 1:15k
- National Parks
- Local planning authorities
- Archaeological Surveys**
- Geophysical Survey Phase 1
- Geophysical Survey - Phase 2
- Pipeline between the Water Recycling Plant site and Otterbourne Water Supply Works**
- Section G: Crockerhill to Wickham
- Section H: Wickham to Shedfield
- Section J: Shedfield to the River Hamble
- Construction compounds
- Above Ground Plant**
- Intermediate Pumping Station

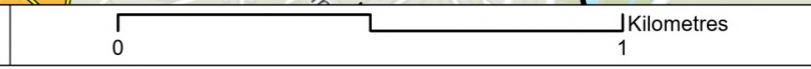
Coordinate system: British National Grid; Datum: OSGB 1936  
 Data sources: © Crown copyright and database rights 2026 Ordnance Survey 0100031673. Sources: Esri, TomTom, Garmin, FAO, NOAA, USGS, © OpenStreetMap contributors, and the GIS User Community, Contains OS data © Crown Copyright and database right 2023 Contains data from OS Zoomstack, Contains OS data © Crown Copyright and database right 2025. Contains data from OS Zoomstack

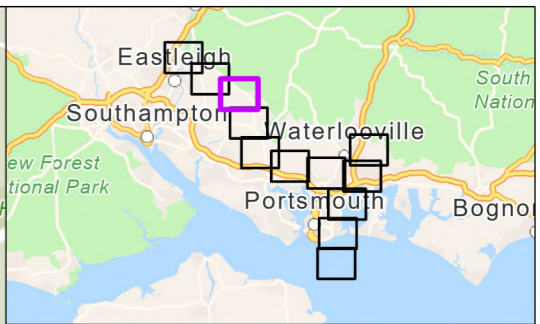
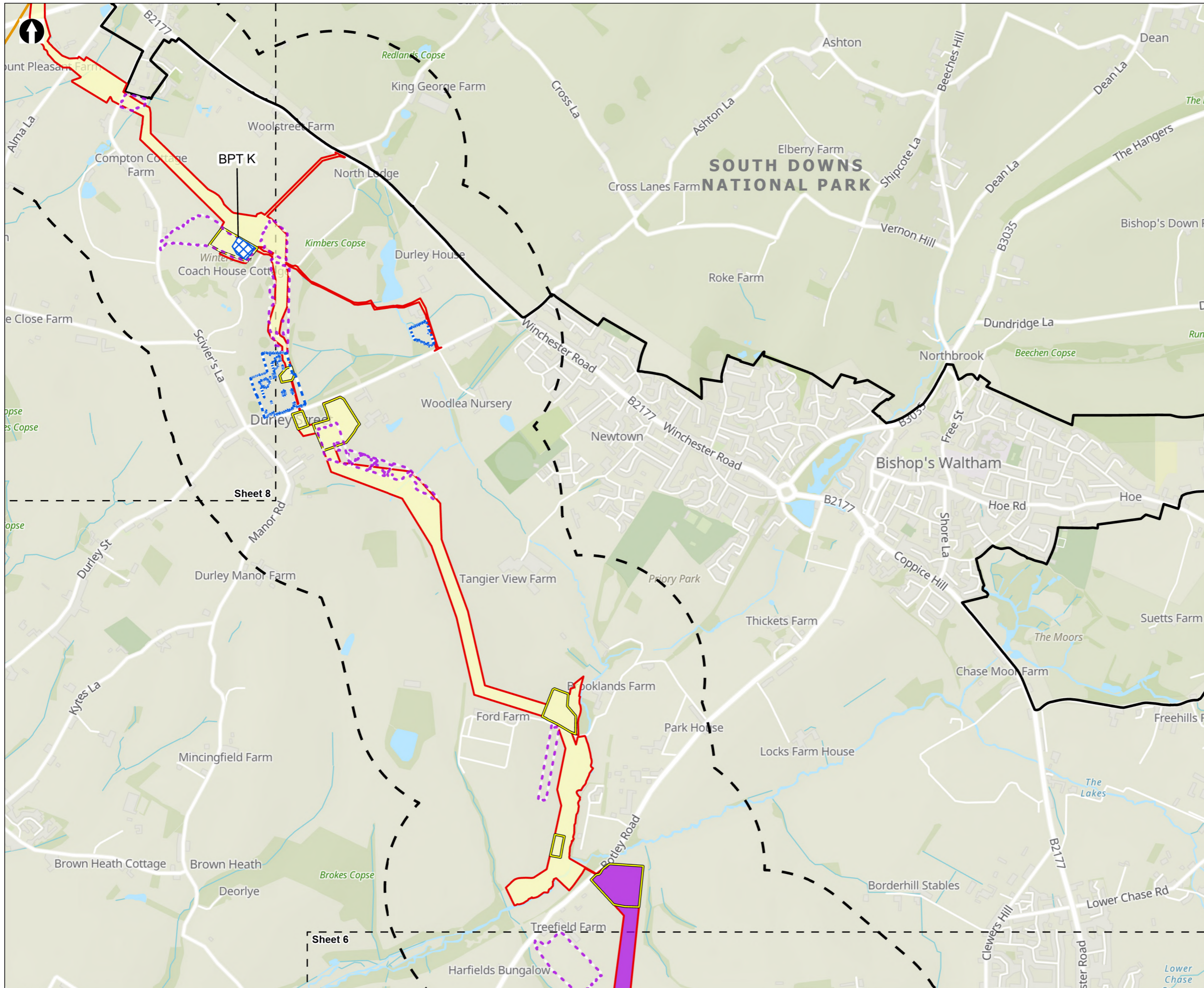
PROJECT TITLE  
 Hampshire Water Transfer and Water Recycling Project



Figure 7.4  
 Coverage of archaeological surveys undertaken  
 Sheet 6 of 12

|                         |                   |                |                 |
|-------------------------|-------------------|----------------|-----------------|
| Drawn<br>DL             | GIS Checked<br>MW | Checked<br>MP  | Approved<br>AK  |
| Scale at A3<br>1:15,000 | Status<br>Final   | Revision<br>05 | Security<br>STD |





- Order Limits
- Study Area (500m buffer)
- Sheet Extent Boxes 1:15k
- National Parks
- Local planning authorities
- Archaeological Surveys**
- Geophysical Survey Phase 1
- Geophysical Survey - Phase 2
- Pipeline between the Water Recycling Plant site and Otterbourne Water Supply Works**
- Section J: Shedfield to the River Hamble
- Section K: The River Hamble to Lower Upham
- Construction compounds
- Above Ground Plant**
- Break Pressure Tank

Coordinate system: British National Grid; Datum: OSGB 1936  
 Data sources: © Crown copyright and database rights 2026 Ordnance Survey 0100031673. Sources: Esri, TomTom, Garmin, FAO, NOAA, USGS, © OpenStreetMap contributors, and the GIS User Community, Contains OS data © Crown Copyright and database right 2023 Contains data from OS Zoomstack, Contains OS data © Crown Copyright and database right 2025. Contains data from OS Zoomstack

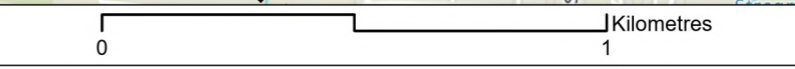
PROJECT TITLE  
 Hampshire Water Transfer and Water Recycling Project



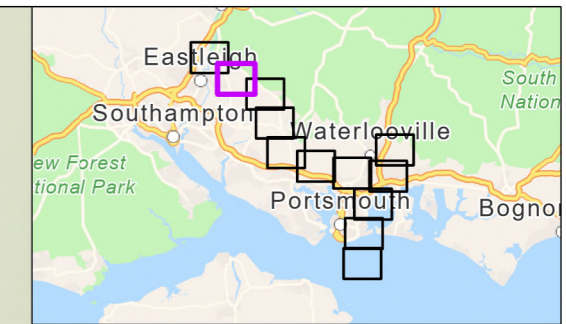
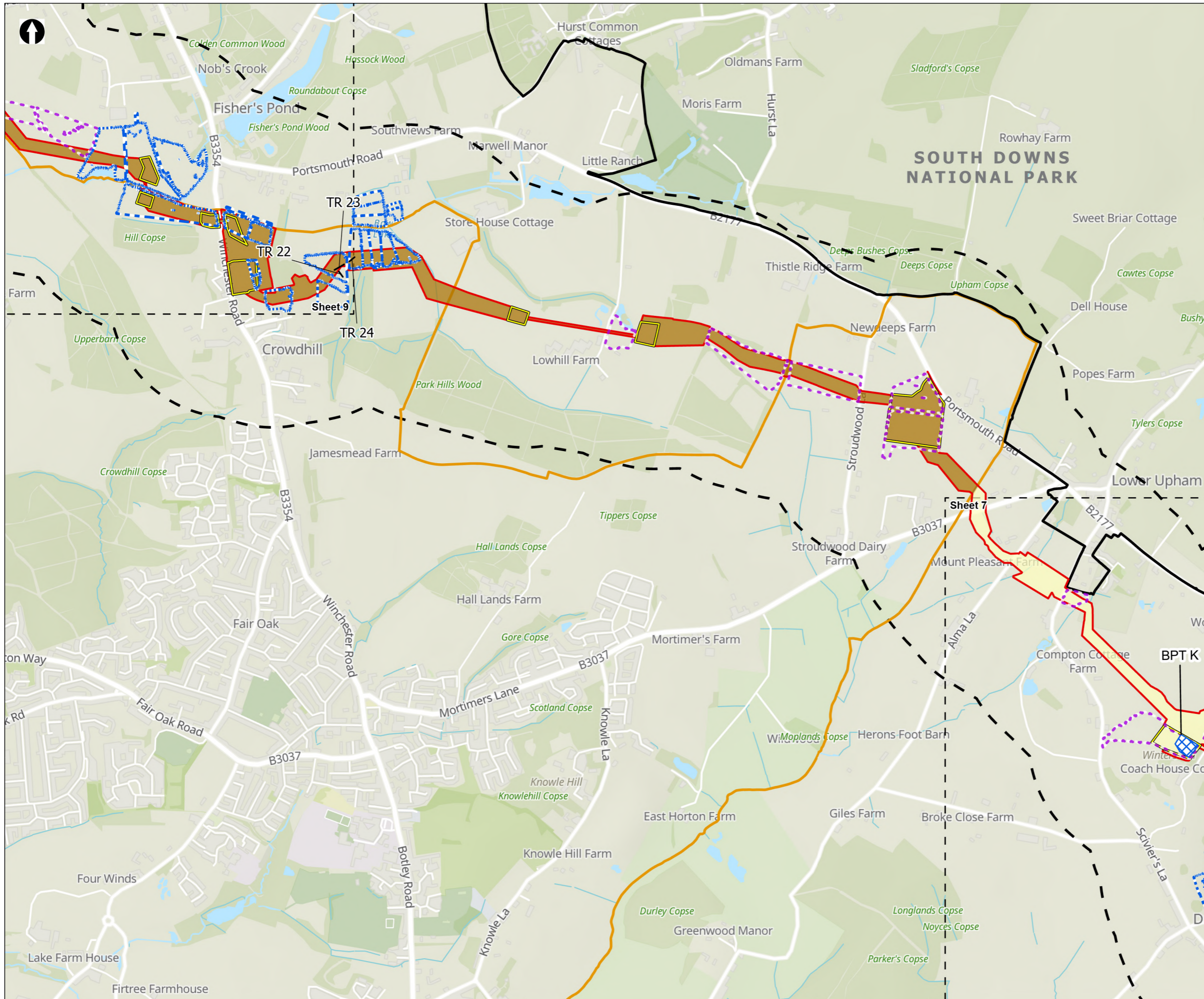
Figure 7.4  
 Coverage of archaeological surveys undertaken  
 Sheet 7 of 12

|                                |                          |                       |                        |
|--------------------------------|--------------------------|-----------------------|------------------------|
| Drawn<br><b>DL</b>             | GIS Checked<br><b>MW</b> | Checked<br><b>MP</b>  | Approved<br><b>AK</b>  |
| Scale at A3<br><b>1:15,000</b> | Status<br><b>Final</b>   | Revision<br><b>05</b> | Security<br><b>STD</b> |

© Southern Water 2026  
 This document is issued for the party which commissioned it and for specific purposes connected with the captioned project only. It should not be relied upon by any other party or used for any other purpose.  
 We accept no responsibility for the consequences of this document being relied upon by any other party, or being used for any other purpose, or containing any error or omission which is due to an error or omission in data supplied to us by other parties.



Drawing Number  
**PC5223-RHD-ES-ZZ-D-Z-0144**



- Order Limits
- Study Area (500m buffer)
- Sheet Extent Boxes 1:15k
- National Parks
- Local planning authorities
- Archaeological Surveys**
- Geophysical Survey Phase 1
- Geophysical Survey - Phase 2
- Pipeline between the Water Recycling Plant site and Otterbourne Water Supply Works**
- Section K: The River Hamble to Lower Upham
- Section L: Lower Upham to Brambridge
- Construction compounds
- Above Ground Plant**
- Break Pressure Tank

Coordinate system: British National Grid; Datum: OSGB 1936  
 Data sources: © Crown copyright and database rights 2026 Ordnance Survey 0100031673. Sources: Esri, TomTom, Garmin, FAO, NOAA, USGS, © OpenStreetMap contributors, and the GIS User Community, Contains OS data © Crown Copyright and database right 2023. Contains data from OS Zoomstack, Contains OS data © Crown Copyright and database right 2025. Contains data from OS Zoomstack

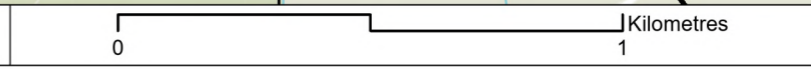
PROJECT TITLE  
 Hampshire Water Transfer and Water Recycling Project



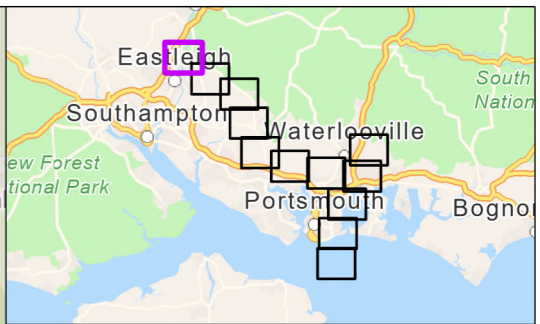
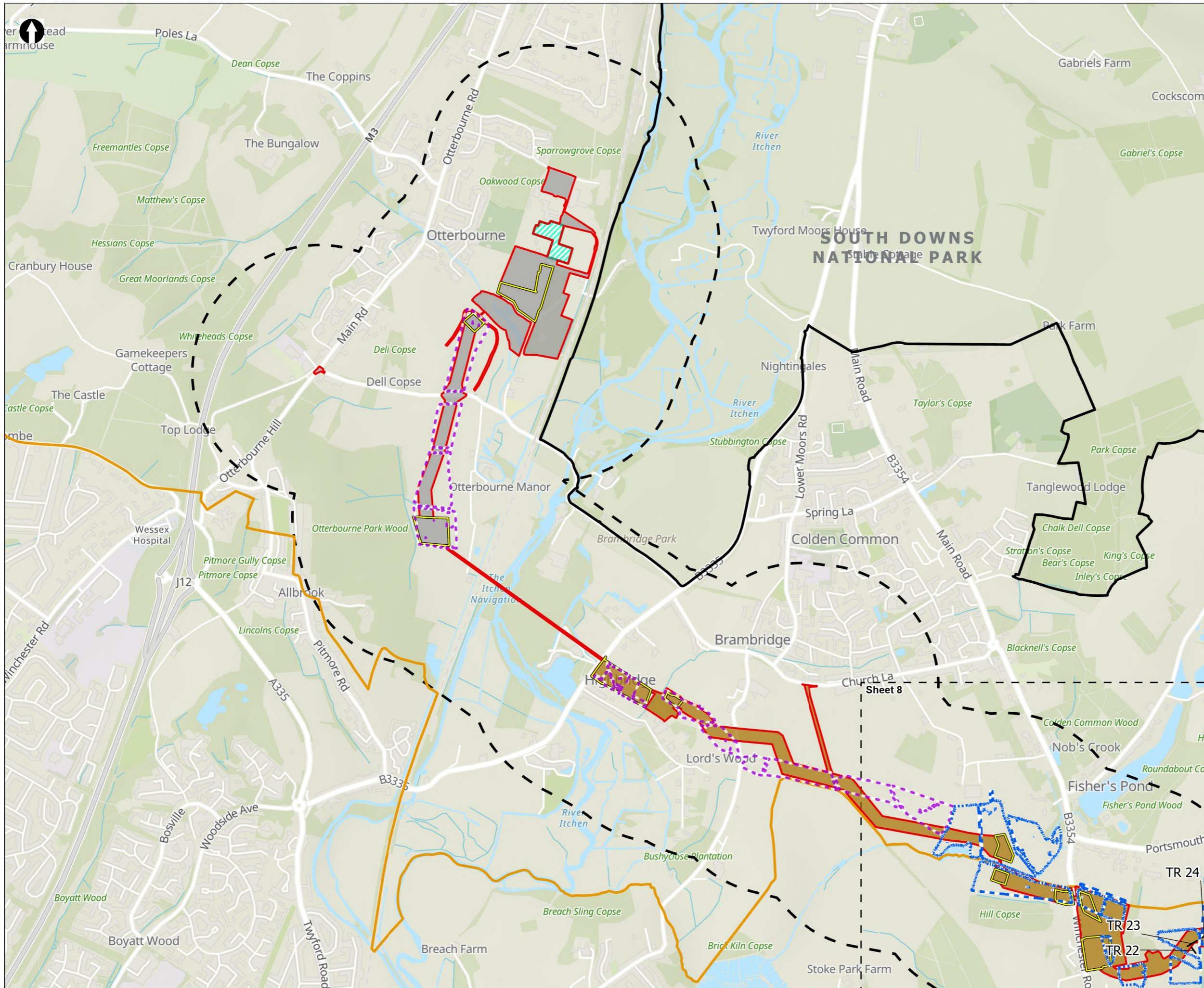
Figure 7.4  
 Coverage of archaeological surveys undertaken  
 Sheet 8 of 12

|                                |                          |                       |                        |
|--------------------------------|--------------------------|-----------------------|------------------------|
| Drawn<br><b>DL</b>             | GIS Checked<br><b>MW</b> | Checked<br><b>MP</b>  | Approved<br><b>AK</b>  |
| Scale at A3<br><b>1:15,000</b> | Status<br><b>Final</b>   | Revision<br><b>05</b> | Security<br><b>STD</b> |

© Southern Water 2026  
 This document is issued for the party which commissioned it and for specific purposes connected with the captioned project only. It should not be relied upon by any other party or used for any other purpose.  
 We accept no responsibility for the consequences of this document being relied upon by any other party, or being used for any other purpose, or containing any error or omission which is due to an error or omission in data supplied to us by other parties.



Drawing Number  
**PC5223-RHD-ES-ZZ-D-Z-0144**



- Order Limits
- Study Area (500m buffer)
- Sheet Extent Boxes 1:15k
- National Parks
- Local planning authorities
- Archaeological Surveys**
- Geophysical Survey Phase 1
- Geophysical Survey - Phase 2
- Pipeline between the Water Recycling Plant site and Otterbourne Water Supply Works**
- Section L: Lower Upham to Brambridge
- Section M: Brambridge to Otterbourne Water Supply Works
- Limits of Deviation for Otterbourne INNS Treatment Plant
- Construction compounds

Coordinate system: British National Grid; Datum: OSGB 1936  
 Data sources: © Crown copyright and database rights 2026 Ordnance Survey 0100031673. Sources: Esri, TomTom, Garmin, FAO, NOAA, USGS, © OpenStreetMap contributors, and the GIS User Community, Contains OS data © Crown Copyright and database right 2023 Contains data from OS Zoomstack, Contains OS data © Crown Copyright and database right 2025. Contains data from OS Zoomstack

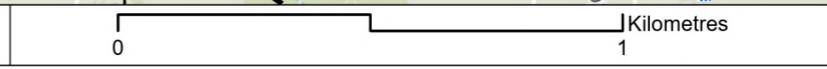
PROJECT TITLE  
 Hampshire Water Transfer and Water Recycling Project



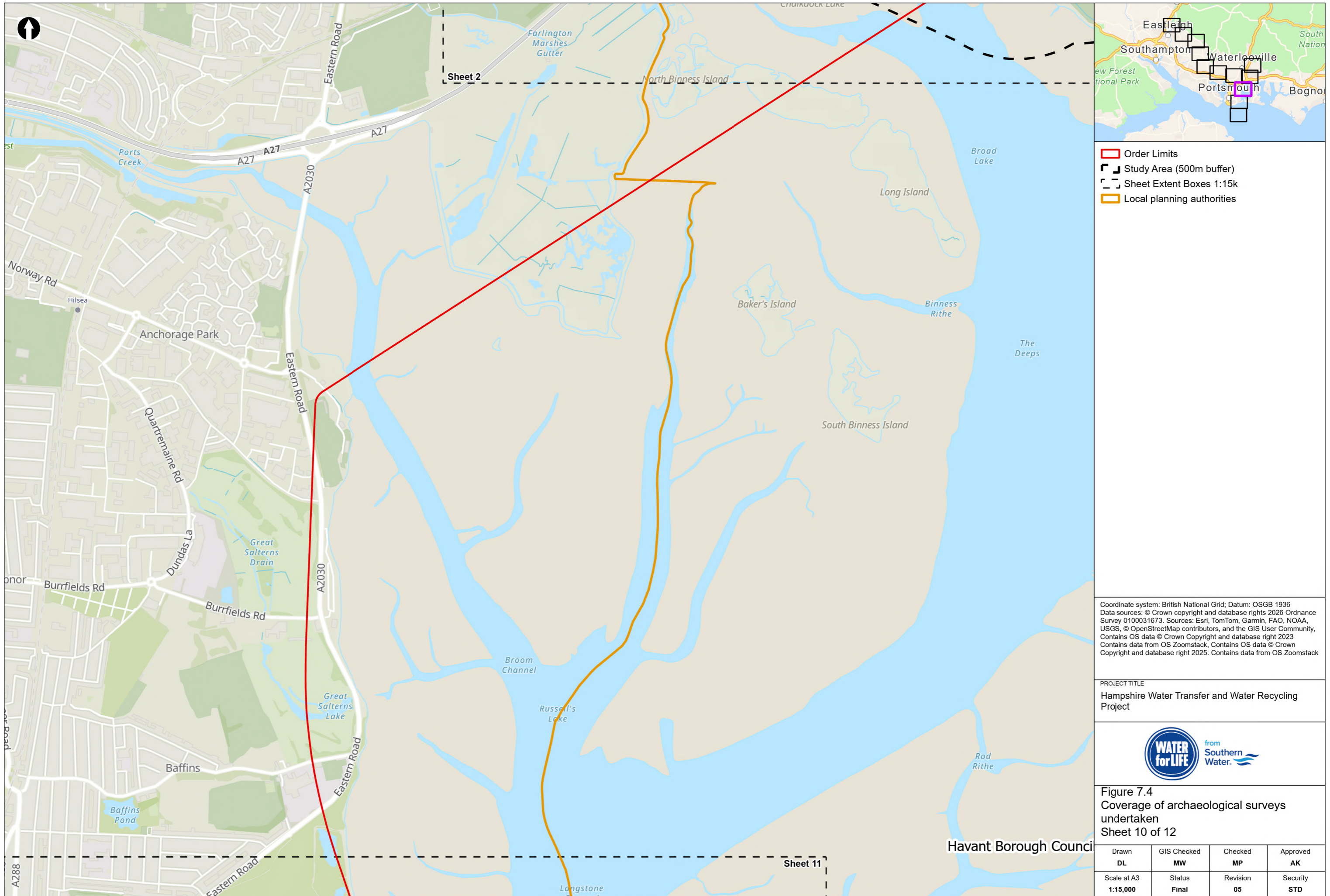
Figure 7.4  
 Coverage of archaeological surveys undertaken  
 Sheet 9 of 12

|                         |                   |                |                 |
|-------------------------|-------------------|----------------|-----------------|
| Drawn<br>DL             | GIS Checked<br>MW | Checked<br>MP  | Approved<br>AK  |
| Scale at A3<br>1:15,000 | Status<br>Final   | Revision<br>05 | Security<br>STD |

© Southern Water 2026  
 This document is issued for the party which commissioned it and for specific purposes connected with the captioned project only. It should not be relied upon by any other party or used for any other purpose. We accept no responsibility for the consequences of this document being relied upon by any other party, or being used for any other purpose, or containing any error or omission which is due to an error or omission in data supplied to us by other parties.



Drawing Number  
 PC5223-RHD-ES-ZZ-D-Z-0144



- Order Limits
- Study Area (500m buffer)
- Sheet Extent Boxes 1:15k
- Local planning authorities

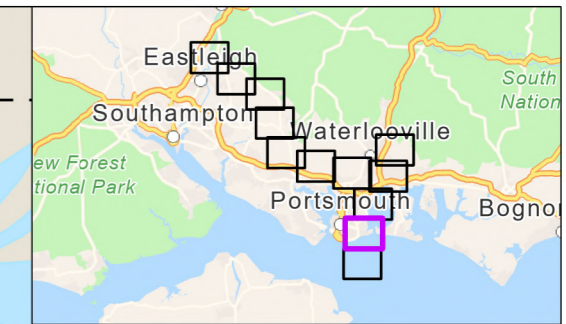
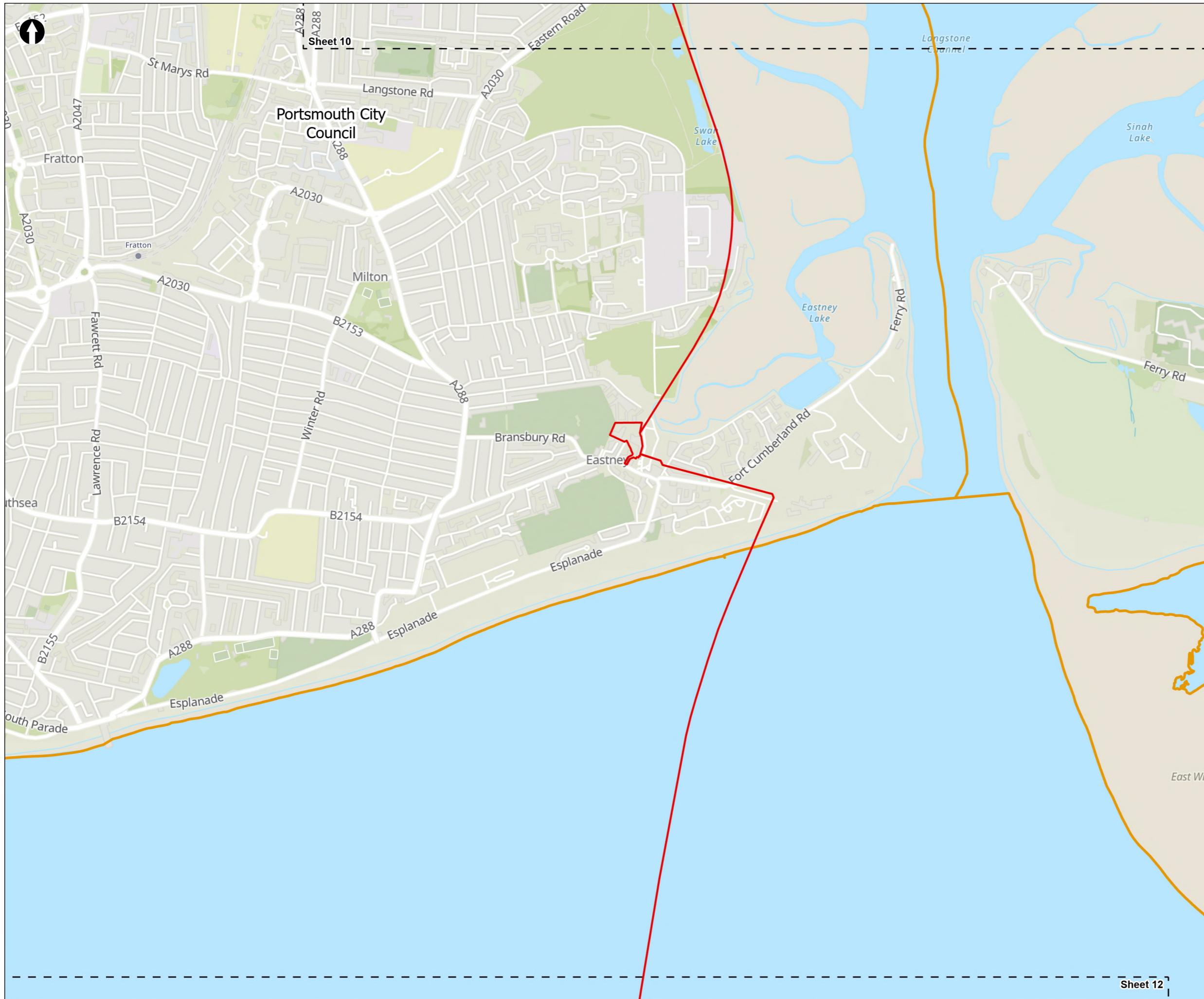
Coordinate system: British National Grid; Datum: OSGB 1936  
 Data sources: © Crown copyright and database rights 2026 Ordnance Survey 0100031673. Sources: Esri, TomTom, Garmin, FAO, NOAA, USGS, © OpenStreetMap contributors, and the GIS User Community, Contains OS data © Crown Copyright and database right 2023. Contains data from OS Zoomstack, Contains OS data © Crown Copyright and database right 2025. Contains data from OS Zoomstack

PROJECT TITLE  
**Hampshire Water Transfer and Water Recycling Project**



**Figure 7.4**  
**Coverage of archaeological surveys undertaken**  
 Sheet 10 of 12

|                                |                          |                       |                        |
|--------------------------------|--------------------------|-----------------------|------------------------|
| Drawn<br><b>DL</b>             | GIS Checked<br><b>MW</b> | Checked<br><b>MP</b>  | Approved<br><b>AK</b>  |
| Scale at A3<br><b>1:15,000</b> | Status<br><b>Final</b>   | Revision<br><b>05</b> | Security<br><b>STD</b> |



**Order Limits** (Red line)

**Sheet Extent Boxes 1:15k** (Dashed line)

**Local planning authorities** (Orange outline)

Coordinate system: British National Grid; Datum: OSGB 1936  
 Data sources: © Crown copyright and database rights 2026 Ordnance Survey 0100031673. Sources: Esri, TomTom, Garmin, FAO, NOAA, USGS, © OpenStreetMap contributors, and the GIS User Community, Contains OS data © Crown Copyright and database right 2023 Contains data from OS Zoomstack, Contains OS data © Crown Copyright and database right 2025. Contains data from OS Zoomstack

PROJECT TITLE  
**Hampshire Water Transfer and Water Recycling Project**



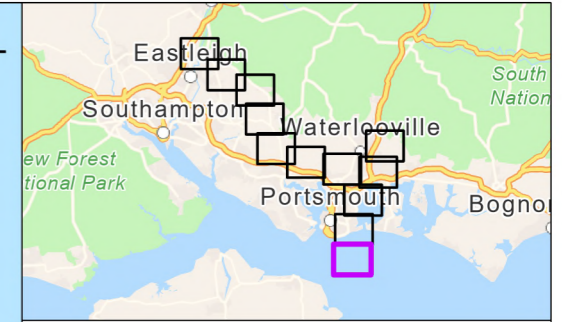
**Figure 7.4**  
 Coverage of archaeological surveys undertaken  
 Sheet 11 of 12

|                                |                          |                       |                        |
|--------------------------------|--------------------------|-----------------------|------------------------|
| Drawn<br><b>DL</b>             | GIS Checked<br><b>MW</b> | Checked<br><b>MP</b>  | Approved<br><b>AK</b>  |
| Scale at A3<br><b>1:15,000</b> | Status<br><b>Final</b>   | Revision<br><b>05</b> | Security<br><b>STD</b> |





Sheet 11



- Order Limits
- Sheet Extent Boxes 1:15k

Coordinate system: British National Grid; Datum: OSGB 1936  
 Data sources: © Crown copyright and database rights 2026 Ordnance Survey 0100031673. Sources: Esri, TomTom, Garmin, FAO, NOAA, USGS, © OpenStreetMap contributors, and the GIS User Community, Contains OS data © Crown Copyright and database right 2023 Contains data from OS Zoomstack, Contains OS data © Crown Copyright and database right 2025. Contains data from OS Zoomstack

PROJECT TITLE  
 Hampshire Water Transfer and Water Recycling Project



Figure 7.4  
 Coverage of archaeological surveys undertaken  
 Sheet 12 of 12

|                                |                          |                       |                        |
|--------------------------------|--------------------------|-----------------------|------------------------|
| Drawn<br><b>DL</b>             | GIS Checked<br><b>MW</b> | Checked<br><b>MP</b>  | Approved<br><b>AK</b>  |
| Scale at A3<br><b>1:15,000</b> | Status<br><b>Final</b>   | Revision<br><b>05</b> | Security<br><b>STD</b> |

